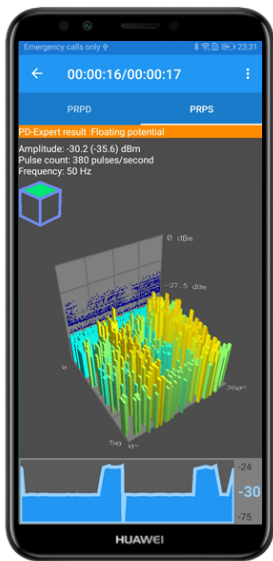




PD74i *Smart PD Detection*

Type	Permanent Portable
Best for	C-GIS GIS Cables Transformers
Methods	HF UHF TEV Acoustic DAC

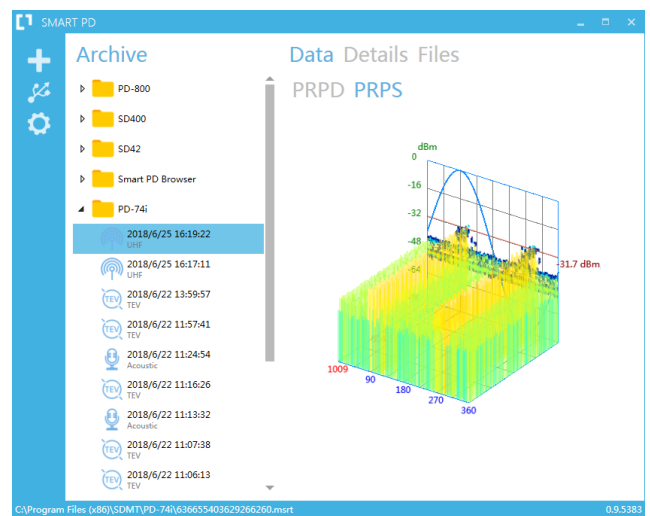
- ▶ Small-sized and Multifunctional
- ▶ Real-time data analysis
- ▶ Mobile and Desktop Apps
- ▶ Built-in Li-Ion battery (~8 hours)
- ▶ Power-bank compatible



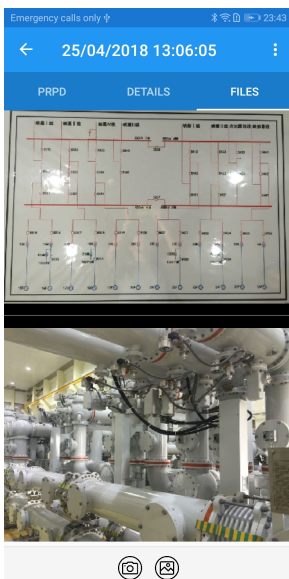
SmartPD App

PD74i Wireless Partial Discharge Detector based on intelligent, accurate and portable design concept. It provides various technics for better PD recognition such as HF, UHF, TEV, Acoustic (contact/non-contact).

SmartPD is an Android application using to operate PD74i. Using smart-phone or tablet it allows you to see real-time data of inspecting object and save measurements for the future analysis. Wi-Fi and Mobile Broadband gives flexibility in sharing data with colleges.



PD Browser



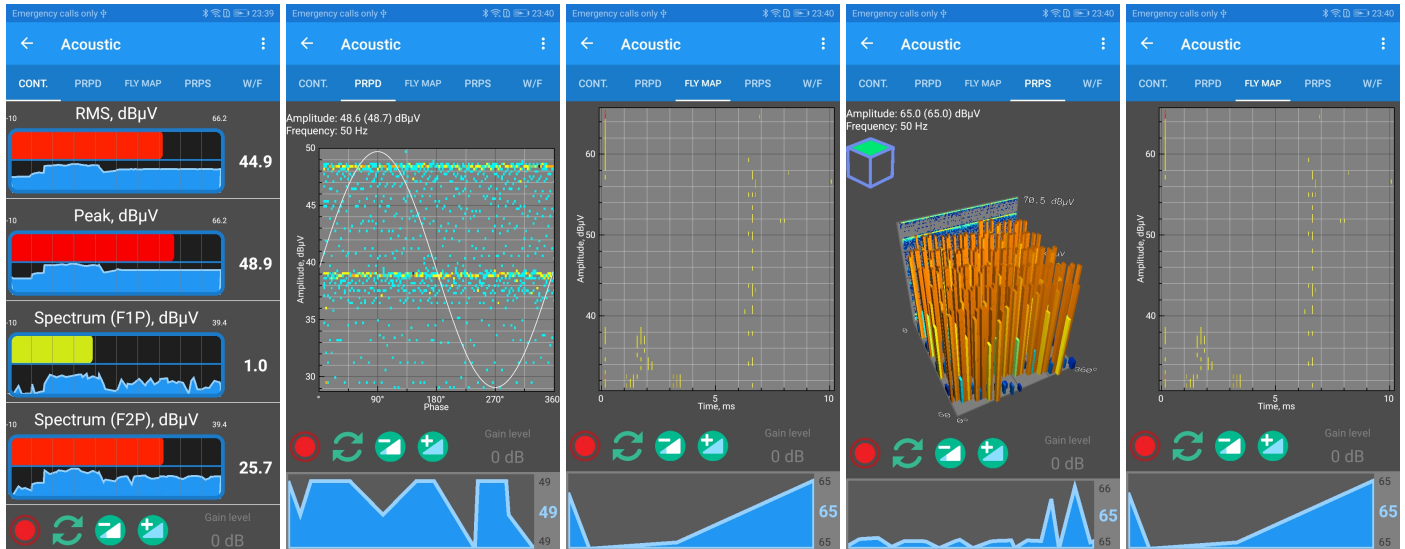
The recorded data can be played back at any time. Text, pictures, video, and other information can be attached to any data, which make on-site test became paperless. Data and attachments can be shared via real-time communication software or email.

Desktop application makes it convenient to analyze data collected on site. SmartPD allows to stream measuring data and related media to remote server. Supervisor can assign tasks to the staff and collect data in real-time from the command center.

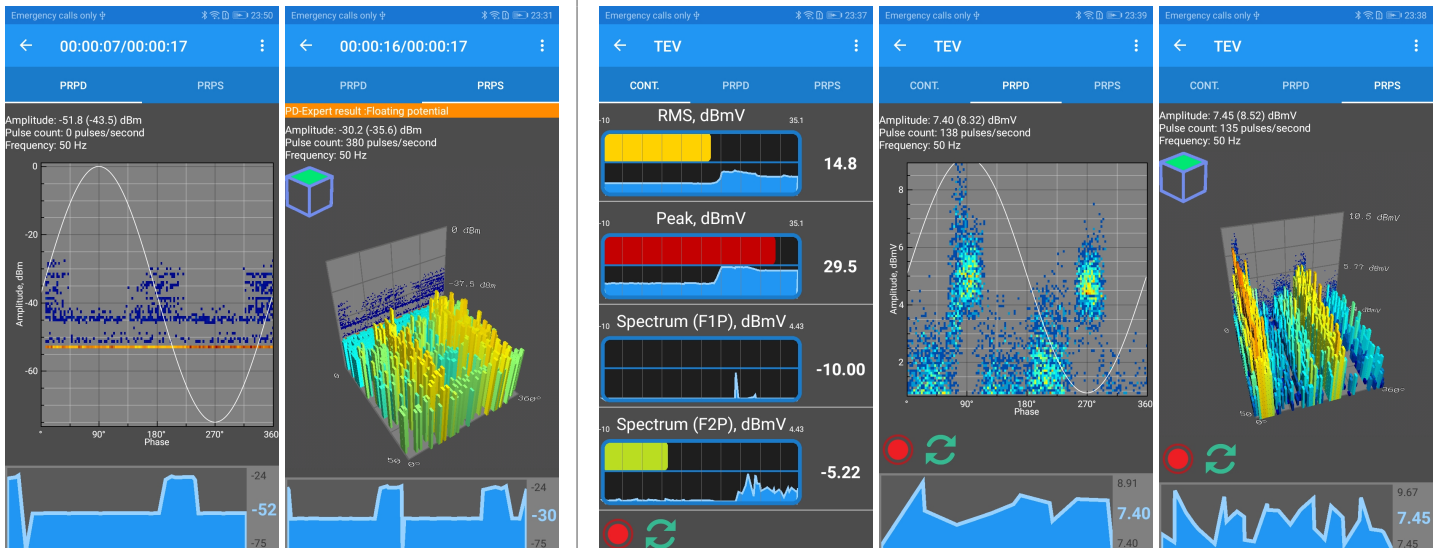




Smart Diagnostic Monitoring Technologies



Acoustic



UHF

TEV

Specifications

	HF	UHF	TEV	Acoustic
Bandwidth	100 kHz ... 20 MHz	300 MHz ... 1.5 GHz	3 ... 100 MHz	AE : 20 ... 300 kHz AA : 40 ± 1 kHz
Amplitude range	-5 ... +5 V	-80 ... -5 dBm	70 dB	70 dB
Frequency sync	Wireless, Internal (20 ... 350 Hz)			
Connectivity	Wi-Fi, Cellular, Bluetooth, USB			
Operating temperature	-20 ... +45 °C			
Operating humidity	<95% non-condensing			
Size, mm	147 × 110 × 34			
Weight	700 g			